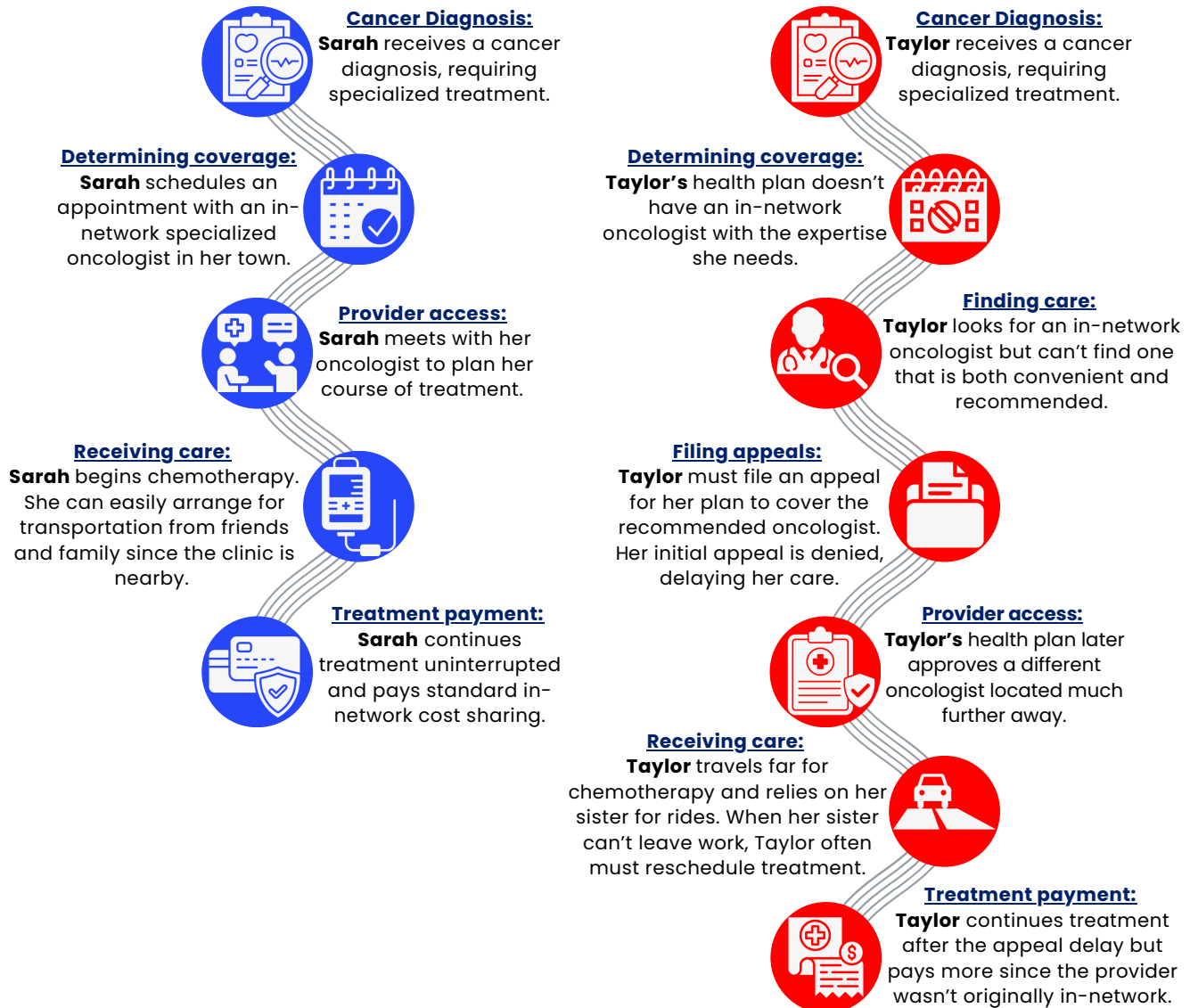


Network Adequacy Sample Scenario

Health plans contract with providers (including clinicians and facilities) to deliver care to plan members at negotiated rates. These networks play a central role in determining enrollees' access to care. For more information, see our white paper on network adequacy.

The scenario below illustrates why robust provider networks are especially critical for cancer patients. Assume Sarah and Taylor are two 50-year-old women who were both recently diagnosed with cancer. Upon receiving their diagnoses, they received names of recommended oncologists to determine the most appropriate course of treatment. Sarah is enrolled in a health plan with a strong provider network, while Taylor's health plan offers a much narrower network of available providers.



Robust Provider Networks Safeguard Cancer Patients

Cancer patients often require tailored treatment regimens and coordinated care across multiple specialists. Strong provider networks – like Sarah’s – give patients reliable access to essential specialists and subspecialists.

When networks are too limited, cancer patients like Taylor may have to travel long distances for care or rely on out-of-network providers, which is costly and can delay or disrupt treatment.

ACS CAN’s Position

ACS CAN supports efforts to develop stronger network adequacy standards to ensure that people with serious conditions like cancer have access to affordable, quality health coverage and treatment.